

Power Sprayers

OPERATIONS

MANUAL

PARTS

BOOK

PRINTED 4/02

THIS MANUAL COVERS HIGH PRESSURE SPRAYERS(S) BELOW

MODEL	ITEM NO.
6500	# 029421
7560	# 029414
7560XL	# 029424
9910 w/ 5.5 Kawasaki	# 039069
9910 w/ 5.5 Honda	# 040197

LIMITED WARRANTY

Allen Engineering Corporation warrants its products to be free of defects in material or workmanship for the following periods:

A. All New Machines and Part	6 Months
B. All New Gear Boxes	2 Years
C. All Factory Reconditioned Gear Boxes	1 Year

Warranty period begins on first day of use by End User. This first day of use is established by a completed warranty card or a Bill of Sale to the end user. All warranty is based on the following limited warranty terms and conditions.

1. Allen Engineering Corporation's obligation and liability under this warranty is limited to repairing or replacing parts if, after Allen's inspection, it is determined to be a defect in material or workmanship. Allen Engineering Corporation reserves the choice to repair or replace.
2. If Allen Engineering Corporation chooses to replace the part, it will be at no cost to the customer and will be made available to the Distributor/Dealer from whom the customer purchased the product.
3. Replacement or repair parts, installed in the product, are warranted only for the remainder of warranty period of the product as though they were the original parts.
4. Allen Engineering Corporation's warranty applies only to the products that are manufactured by Allen Engineering and does not cover component parts such as engines and clutches. Allen Engineering Corporation DOES NOT warranty clutches. Engine warranty claims should be made directly to an authorized factory service center for the particular engine make.
5. Allen Engineering Corporation's warranty does not cover the normal maintenance of products or its components (such as engine tune-ups and oil changes). The warranty also does not cover normal wear and tear items (such as belts and consumables).
6. Allen Engineering Corporation's warranty will be void if it is determined that the defect resulted from operator abuse, failure to perform normal maintenance on the product, modification to product, alterations or repairs made to the product without the written approval of Allen Engineering Corporation. Allen Engineering Corporation specifically excludes from warranty any damage to any trowels resulting from an impact to the rotors. Allen Engineering Corporation also excludes from warranty any failure of clutches on any engine driven piece of equipment.
7. If a new gear box has a factory defect within the first year of use, Allen Engineering Corporation will either repair the gear box or replace it with a new gear box. If a new gearbox has a factory defect in the second year of use, Allen Engineering Corporation will either repair it or replace it with a factory reconditioned gear box. Impact damage is NOT covered under the gear box warranty.
8. Allen engineering Corporation will pay shop labor repair on warranty at the Allen Engineering Shop Labor Rate in existence on the date of the warranty claim. An Allen Engineering Labor Chart will determine the time allowed to complete a repair and will govern the shop labor hours that will be allowed.
9. Allen Engineering Corporation will pay freight on warranty replacement parts at Worldwide standard ground rates. No warranty replacement parts will be shipped air freight at the expense of Allen Engineering Corporation. Allen Engineering only pays outbound freight charges when sending warranty replacement parts to the customer VIA ground service. Allen Engineering does not pay any inbound freight, however, if Allen Engineering determines this to be warranty defect only then will Allen Engineering reimburse the customer for inbound freight at standard ground rates.
10. Allen Engineering Corporation's warranty policy WILL NOT COVER the following; taxes, shop supplies, environmental surcharges, air freight, travel time, loss of rental revenue, or any other charges whatsoever or any liabilities for direct, incidental, or consequential damage or delay.
11. **Allen Engineering Corporation makes no other warranty, expressed or implied. This limited warranty is in lieu of the warranty of merchantability and fitness. There are no other warranties that extend beyond the description on this document.**
12. No Allen Engineering Corporation employee or representative is authorized to change this warranty in any way or grant any other warranty unless such change is made in writing and signed by an officer of Allen Engineering Corporation.

ASSEMBLY INSTRUCTIONS

1A ASSEMBLY

1.1 Assembly of *Razorback*[®] Power Sprayers to a barrel.

After you have uncrated all components received, place the sprayer (A) on top of the barrel.

Using the barrel locks (B) supplied, fasten the sprayer to the barrel.

Take the suction tube (C) and the 5' X 3/4" hose (D) that is supplied and fasten together. Put the suction tube in the larger hole of the barrel. Connect opposite end of suction hose to the 3/4" QDC connector located on the sprayer.

Take the bypass tube (E) and the 5' X 1/2" hose (F) that is supplied and fasten together. Put the bypass tube in the smaller hole of the barrel. Connect opposite end of the bypass hose to the 1/2" QDC connector located directly below the flow control valve.

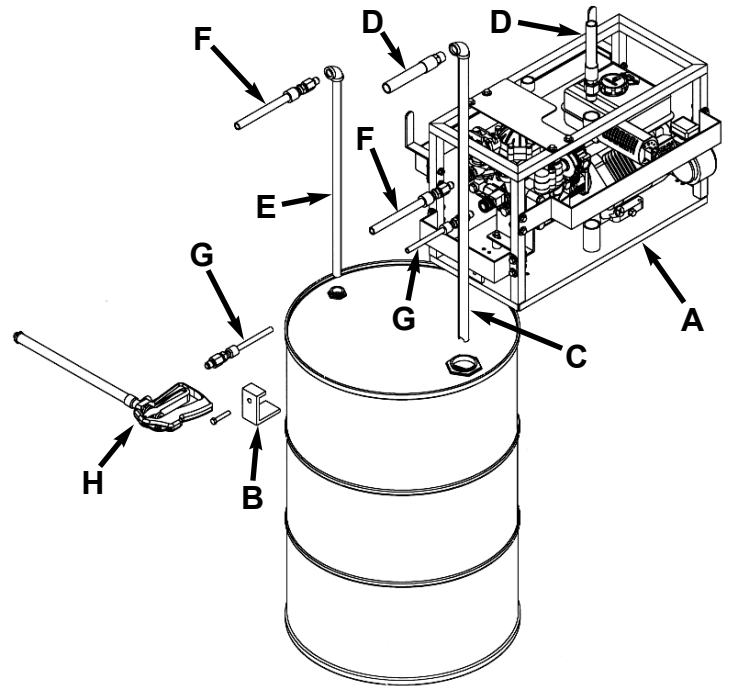
Locate the spray wand hose (G). This hose will be the longer of the three. Connect one end to the spray wand (H) and the opposite end to the 1/2" QDC connector located on the 90 degree elbow below the flow control valve on the sprayer.

NOTE: Your sprayer and components may differ from the one shown in Fig. 1. This will depend on what model you order.

1.2 Assembly of *Razorback*[®] Power Sprayers to a Push Cart.

After you uncrate all components received, place the sprayer (A) on the push cart (B). Use the fasteners provided to fasten the sprayer to the frame. If you are using a 9910 sprayer, you will need to remove the right hand side, handle to frame, brace (C) in order to place this sprayer onto the frame. After the 9910 sprayer is fastened to the frame, replace the brace. If you are using a 6500, 7560, or a 7560XL sprayer, this brace will not have to be removed.

Take the suction tube (D) and the 5' X 3/4" hose (E) that is supplied and fasten together. Put the suction tube in the larger hole of the barrel. Connect opposite end of suction hose to the 3/4" QDC connector located on the sprayer.



Model 9910 Sprayer and Components Shown

Fig. 1

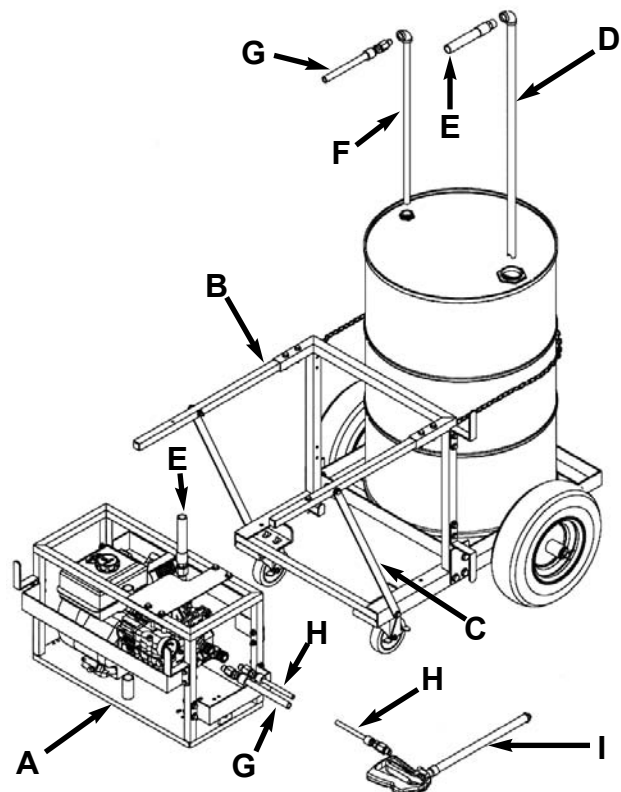


Fig. 2

1A ASSEMBLY

ASSEMBLY INSTRUCTIONS Cont'd

Take the bypass tube (F) and the 5' X 1/2" hose (G) that is supplied and fasten together. Put the bypass tube in the smaller hole of the barrel. Connect opposite end of the bypass hose to the 1/2" QDC connector located directly below the flow control valve.

Locate the spray wand hose (H). This hose will be the longer of the three. Connect one end to the spray wand (I) and the opposite end to the 1/2" QDC connector located on the 90 degree elbow below the flow control valve on the sprayer.

NOTE: Your sprayer and components may differ from the one shown in Fig. 2. This will depend on what model you order.

1.3 Assembly of *Razorback® Power Sprayers* to a Tow Cart.

After you have uncrated all components received, remove cotter key and washer (A). Slide out the pin in order to install the tow handle (B).

Next place the sprayer (C) on the tow cart (D). Use the fasteners provided to fasten the sprayer to the frame. If you are using a 9910 sprayer, place the sprayer to the front of the frame away from the barrel. If you are using a 6500, 7560, or a 7560XL sprayer, this process will not have to be done.

Take the reducer (E) and the 5' X 3/4" hose (F) that is supplied and fasten together. Connect that end to the larger hole on the barrel. Connect opposite end of suction hose to the 3/4" QDC connector located on the sprayer.

Take the 5' X 1/2" bypass hose (G) that is supplied and fasten to the smaller hole on the barrel. Connect opposite end of the bypass hose to the 1/2" QDC connector located directly below the flow control valve.

Locate the spray wand hose (H). This hose will be the longer of the three. Connect one end to the spray wand (I) and the opposite end to the 1/2" QDC connector located on the 90 degree elbow below the flow control valve on the sprayer.

NOTE: Your sprayer and components may differ from the one shown in Fig. 3. This will depend on what model you order.

NOTE: Barrels are not sold by Allen Engineering Corporation

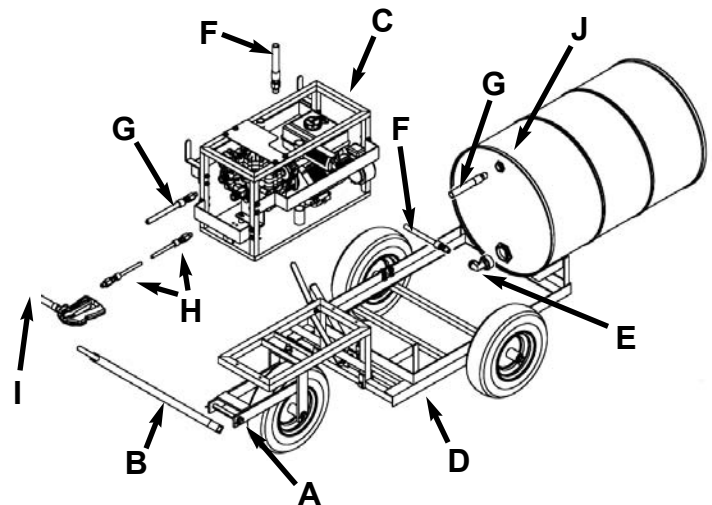


Fig. 3

NOTE: WHEN USING THE TOW CART, BE SURE THAT THE LARGER HOLE OF THE BARREL IS ON BOTTOM. THIS HOLE IS FOR SUCTION. WHEN INSTALLING THE BYPASS HOSE (G) INTO THE SMALLER HOLE, LEAVE A LITTLE LOOSE. IF NOT, POKE OR DRILL A HOLE (J) THE BARREL. THIS WILL HELP AIR FLOW. IT WILL ALSO PREVENT THE COLLAPSING OF THE BARREL (Refer to Fig. 3)

OPERATIONS SERIAL NUMBER LOCATION

2A OPERATIONS

An identification listing the Serial Number is attached to each unit and is located on the base of the mainframe. The number should not be removed.

Please record the information found so it will be available should the identification become damaged . When ordering parts or requesting service information you will always be asked to specify the model number and serial number of the unit.

Model Number

6500 w/ 25' Hose
7560 w/ 25' Hose
7560XL w/ 25' Hose
9910 w/ 25' Hose

HOSE LENGTH
(OPTIONAL)

POWER SPRAYER
PUMP SIZE

Serial Number

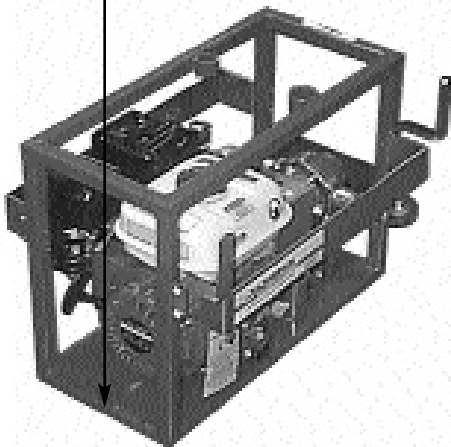
The serial number, found on the barrel lock lug, is a six digit number. The model number identifies your machine and will ensure that you receive the correct replacement parts.

123456

Production Sequence

Identification Plate Location

The serial number is located on the barrel lock tab on the motor end.



FILL IN FOR FUTURE REFERENCES

Model Number: _____

Serial Number: _____

Date Purchased: _____

Purchased From: _____

**High Pressure Sprayer Operating Information
TABLE OF CONTENTS**

1.1	Safety Note2A-5
1.2	Laws Pertaining to Spark Arrestors2A-5
1.3	Operating Safety2A-6
1.4	Service Safety2A-7
1.5	Dimensions2A-7
1.6	Technical Data2A-8
1.7	Periodic Maintenance2A-8
1.8	9910 D30 Diaphragm Pump2A-9

This machine is built with user safety in mind. However, it can present hazards if improperly operated and serviced. Follow operating instructions carefully!

If you have any questions about operating or servicing this equipment please contact your Allen Engineering Distributor or Allen Engineering Corp. Customer Service at 800-643-0095 or 870-236-7751.

Important Reminder

2A OPERATIONS

Complete any warranty requirements as specified by the engine manufacturer in their instructions found inside the information package.

Your engine is not manufactured by Allen Engineering Corp., and therefore is not covered under the Allen Engineering warranty.

Your engine manufacturer should be contacted if you wish to purchase a parts manual or a repair manual for your engine.

Refer to enclosed owners engine manual for complete O&M instructions.

Your Distributor

Your Distributor has Allen Engineering trained mechanics and original Allen Engineering replacement parts. Always contact the Allen Engineering Distributor who sold you this machine for Allen Engineering Certified repairs and replacement parts.

Place distributor information here for future reference.

DISTRIBUTOR NAME: _____	PHONE NUMBER: _____
ADDRESS: _____	
CITY: _____	STATE: _____ ZIP: _____
SALESMAN: _____	
ADDITIONAL INFORMATION: _____	

Information Contained in This Manual

This manual provides information and procedures to safely operate and maintain the Allen Engineering **Razorback® Power Sprayers**.

For your own safety and protection from personal injury carefully read, understand and observe the safety instructions described in this manual.

Always operate and maintain this machine in accordance with the instructions described in this manual. A well maintained piece of equipment will provide many years of trouble free operation. This manual is divided into the sections listed below.



Ordering Parts

This manual contains an illustrated parts list for help in ordering replacement parts for your machine. Follow the instructions listed below when ordering parts to ensure prompt and accurate delivery. All orders for parts must be made through your local authorized Allen Engineering dealer. All authorized Allen Engineering dealers must fax a copy of the parts order to customer service. The fax number is (870-236-3934). Facsimile orders must contain the following information:

1. On all orders for service parts include SERIAL NUMBER and MODEL number.
2. Shipment may be delayed if this information is not included.
3. Include correct description and part number from part section 2A.
4. **State exact shipping instructions including preferred routing and complete destination address. Also please indicate your preferred freight carrier. If no freight carrier is indicated Allen Engineering reserves the right to ship the shipment the best way possible. Once a shipment leaves Allen Engineering's docks it becomes the responsibility of the freight carrier to insure that it arrives at it's intended destination.**
5. **DO NOT** return parts to Allen Engineering without receiving written authorized Return Goods Authorization (RGA) from Allen Engineering. All authorized returns must be shipped pre-paid. **All unauthorized returns will be shipped back to the addressee at their expense.**

Keep this manual or a copy of it with the machine. If you loose this manual or need an additional copy please contact your Allen distributor or Allen Engineering Corporation at (800) 643-0095 and order manual # 038479.

1.1 Safety Notes

This manual contains NOTES, CAUTIONS and WARNINGS which must be followed to reduce the possibility of improper service damage to the equipment or personal injury. Read and follow all NOTES, CAUTIONS and WARNINGS included in this manual.

NOTE Contains additional information important to a procedure.

CAUTION Provides information important to prevent errors which could damage machine or components.

WARNING Warns of conditions or practices which could lead to personal injury or death.

1.2 Laws Pertaining to Spark Arrestors

Notice: Some states require that in certain locations arrestors be used on internal combustion engines. A spark arrester is a device designed to prevent the discharge of spark or flames from the engine exhaust. It is often required when operating equipment on forested land to prevent the risk of fires. Consult the engine distributor or local authorities and make sure that you comply with regulations regarding spark arrestors.

2A OPERATIONS

1.3 Operating Safety

Familiarity and proper training are required for the safe operation of this equipment! Equipment operated properly or by untrained personnel can be dangerous! Read the operating instructions contained in both this manual and the engine manual and familiarize yourself with the location and proper use of all controls.

Safety Precautions

1. Read operating and safety instructions before using the High Pressure sprayer. Operate the machine in accordance with the manufacturer's instructions.
2. Inspect your High Pressure Sprayer for damage or tampering that can sometimes occur during shipping.
3. **If damage is found, file a claim with your carrier immediately! Mark freight bill of lading as damaged shipment.**
4. Do not operate High Pressure sprayer if any guards have been removed.
5. Only trained personnel should be allowed to operate you High Pressure Sprayer.
6. No foreign objects such as buckets, tools or materials should ever be attached to on the Sprayer during operation.
7. Do not attempt t fill fuel tank or oil sump while the engine is running. Allow engine to cool before refueling.
8. Do not use over the counter hardware to replace manufacturer's hardware.
9. **WARNING: When operating machines with gas engines in confined areas, the fumes MUST be ventilated!**
10. Always wear safety goggles, ear protection, and gloves when operating the High Pressure Sprayer.
11. Use a pressure relief device on the discharge side of the pump to prevent damage from pressure build-up when the pump discharge is blocked or otherwise closed and the power source is still running.
12. **WARNING: DO NOT pump flammable or explosive fluids such as gasoline, fuel oil, kerosene, etc.**
13. Do not operate pump above recommended rpm.
14. Do not pump at pressures higher than the maximum recommended pressures for the pump.
15. Operate the pump between a temperature range of 45^o to 140^oF.
16. Shut the engine off before servicing.
17. Release all pressure within system before servicing any component.
18. Drain all liquids from the system before servicing.
19. Secure the discharge lines before starting the pump.
20. Check hoses for weak or worn condition before each use. Make certain that all connections are tight and secure.
21. Periodically inspect pump and the system components. Perform routine maintenance as required.
22. Use only pipe, hose fittings rated for maximum rated pressure of pump or pressure at which pressure relief valve is set at.
23. Do not use these pumps for pumping water or other liquids for human or animal consumption.

1.4 Service Safety

Poorly maintained equipment can become a safety hazard! In order for the equipment to operate safely and properly over a long period of time, periodic maintenance and occasional repairs are necessary.

DO NOT attempt to clean or service machine while it is running. Rotating parts can cause severe injury.

DO NOT crank a flooded engine with the spark plug removed. Fuel trapped in the cylinder will squirt out the spark plug opening.

DO NOT test for spark if engine is flooded or the smell of gasoline is present . A stray spark could ignite the fumes.

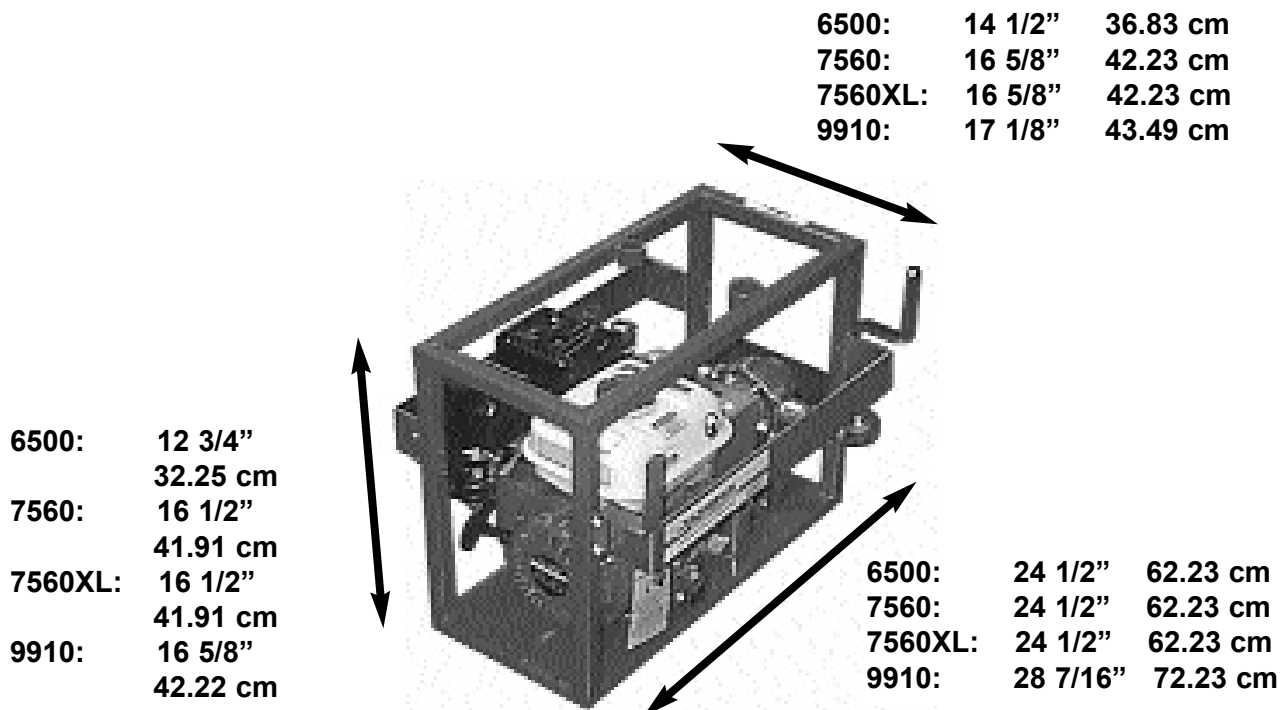
DO NOT use gasoline or other types of fuels or flammable solvents to clean parts especially in enclosed areas. Fumes from fuels and solvents can become explosive and can be hazardous to your health.

ALWAYS operate machine with all safety devices and guards in place and in working order.

ALWAYS keep area around muffler free of debris such as leaves, paper, cartons, etc. A hot muffler could ignite such items starting a fire.

ALWAYS replace worn or damaged components with spare parts designed and recommended by ALLEN ENGINEERING.

1.5 Dimensions



2A OPERATIONS

1.6 Technical Data

MODEL	6500	7560	7560XL	9910
For Compounds with:	Up to 10% Solids	Up to 20% Solids	Up to 30% Solids	30% to 35% Solids
Length	24.5" (62.23cm)	24.5" (62.23cm)	24.5" (62.23cm)	28.4375" (72.23cm)
Width	14.5" (36.83cm)	16.625" (42.23cm)	16.625" (42.23cm)	17.125" (43.49cm)
Height	12.75" (32.36 cm)	16.5" (41.91 cm)	16.5" (41.91 cm)	16.625" (42.22cm)
Fuel Capacity	.66 Gal (2.5 L)	.66 Gal (2.5 L)	.66 Gal (2.5 L)	.9 Gal (3.4 L) Kaw
Max. Flow Rate	5 gpm (17L)	7.5 gpm (27L)	7.5 gpm (27L)	9.5 gpm (36L)
Max. Pressure	300 psi (20.7 B)	300 psi (20.7 B)	300 psi (20.7 B)	300 psi (20.7 B)
Max. RPM	600 RPM	600 RPM	600 RPM	600 RPM
Continuous Operation	100 psi (6.9 B)	100 psi (6.9 B)	100 psi (6.9 B)	100 psi (6.9 B)
Intermittent Operation	300 psi (20.7 B)	300 psi (20.7 B)	300 psi (20.7 B)	300 psi (20.7 B)
Weight	80 lb (36.29 kg)	111 lb (50.35 kg)	111 lb (50.35 kg)	140 lb (63.5 kg)

ENGINE OPTIONS:	6500	7560	7560XL	9910
	4.0 Honda (GX 120)	4.0 Honda (GX 120)	4.0 Honda (GX 120)	5.5 Kaw (FE 170) 5.5 Hon (GX 160)

1.7 Periodic Maintenance

The list below contains basic sprayer and engine maintenance. Refer to engine manufacturer's Operation Manual for additional information on engine maintenance. A copy of the engine Operator's Manual was supplied with the machine when it was shipped.

Check Fuel Level	Daily
Check Air Filter- Replace as needed	Daily
Check and Tighten External Hardware	Daily
Change Engine Oil	100 hrs.
Replace Spark Plug	300 hrs.

Cleaning Sprayer Pump--It is recommended by Allen Engineering to use a soapy water mixture to clean the pump and hoses. Run this mixture until water comes out clear. This will insure that the sealant will not build up in the pump or hoses. This needs to be done after each daily use to insure a prolong life of the pump and hoses.

Long Term Storage--It is recommended to use a 50/50 mixture of glycol/antifreeze if the sprayer is going to be stored for a long period of time.

1.8 9910 D30 Diaphragm Pump

Proper Maintenance and Operation for Reducer, 9910 D30 Pump and Control Valve

1. When changing oil in the Reducer, remove the drain plug (A) located on the bottom of the Reducer. (refer to Fig. 1) After the oil has completely drained, replace drain plug(A) and tighten. To fill, remove side level plug (B) and vent plug (C). (refer to Fig. 1) Fill until the gear lube is no higher than the mark on the dipstick. After proper oil level has been obtained replace plugs.

USE 90W GEAR LUBE TO FILL GEAR CASE.

2. Check oil level in pump daily. Be sure oil is halfway up to the clear oil sight tube (D). If it is not, fill to the correct level using a high-grade, nondetergent, SAE 30 weight oil. This will help prolong the pump life. (refer to Fig. 2)

3. Check the charge pressure (E) on the pulsation dampener before starting the pump. The pressure is checked with a standard automotive air gauge. The pressure should be at approximately **20%** of the maximum operating pressure. (refer to Fig. 3)

4. On the pump you can adjust the pressure by clamping the relief valve adjustment lever (F) down. With the bale hook in the number one position the pressure is about 100 psi; number two is about 250 psi; number three is about 450 psi; number four is about 550 psi. These pressures can be adjusted by using the fine adjustment knob (G) located on top of the relief valve spring. The fine adjustment knob can be rotated when the relief valve lever is in the up position. (refer to Fig. 3)

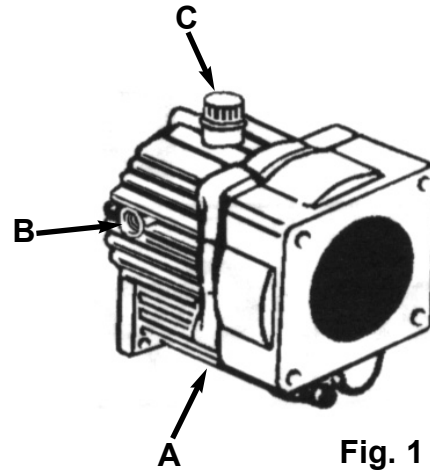


Fig. 1

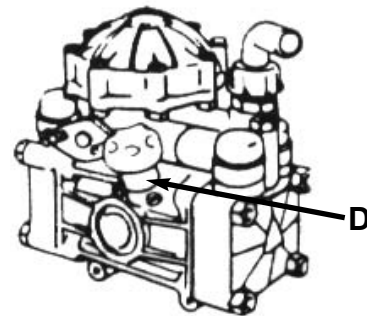


Fig. 2

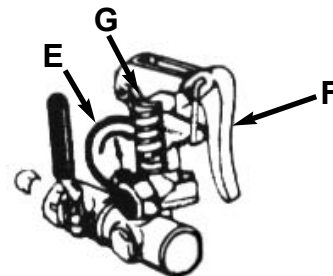


Fig. 3

Model 6500 Assembly3A-2

Model 7560 & 7560XL Assembly3A-3

Model 9910 Assembly3A-4

51-C Push Cart Assembly3A-5

61-T Tow Cart Assembly3A-6

Series 6500 Pump Assembly3A-7

Series 7560 Pump Assembly3A-8

Series 9910 Pump Assembly3A-9

Gear Reduction Kit for 9910 Pump3A-10

Control Kit for 9910 Pump3A-11

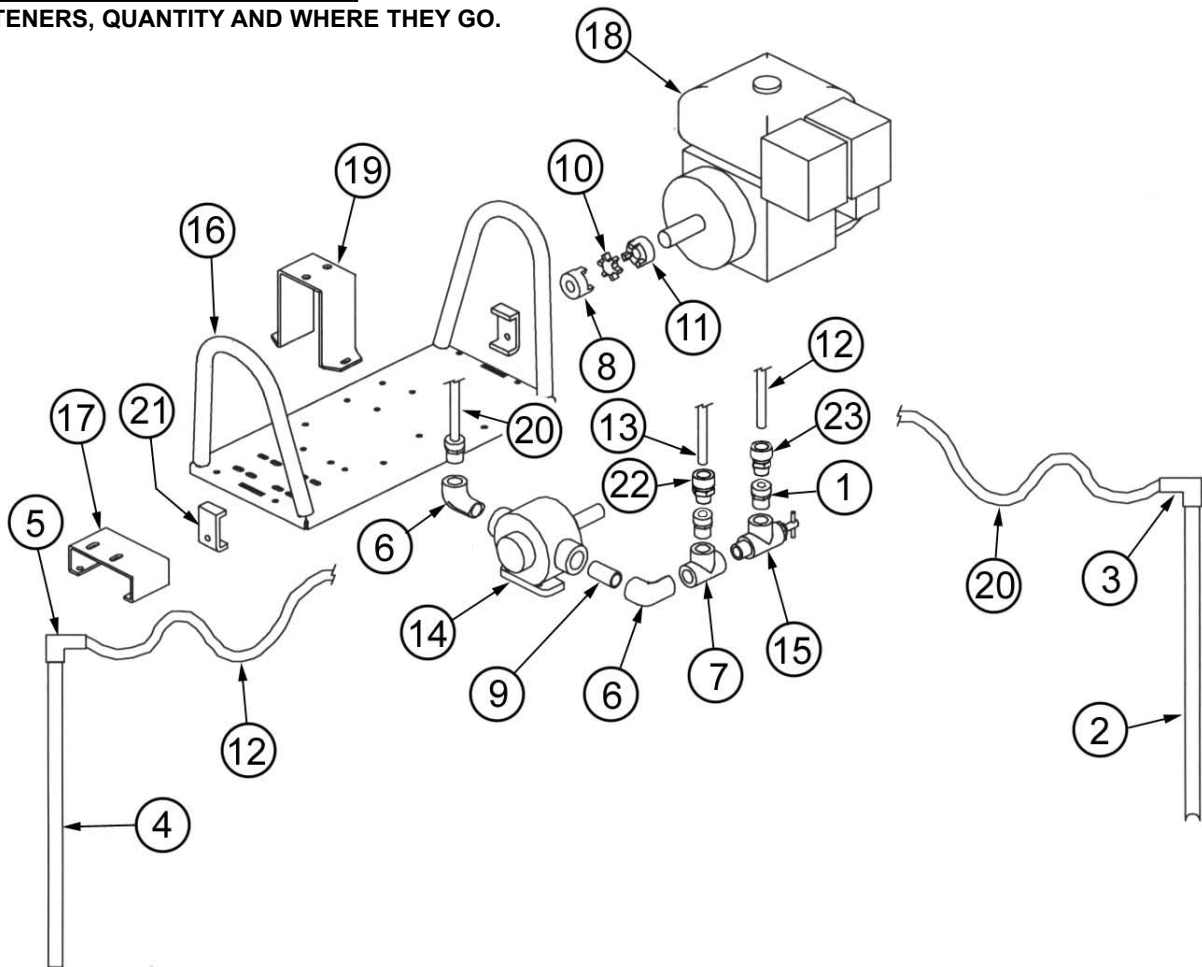
Spray Wand Assembly3A-12

3 Piece Wand Assembly3A-13

MODEL 6500 ASSEMBLY

3A PARTS

FASTENERS ARE NOT SHOWN FOR CLARITY. SEE PARTS LIST FOR FASTENERS, QUANTITY AND WHERE THEY GO.



ILL PART#	DESCRIPTION	QTY
1. .010208 BUSHING, REDUCER 3/4 X 1/2	2
2. .010243 PIPE, SUCTION	1
3. .010244 ELBOW, 3/4" 90 DEG FEMALE GALV	1
4. .010245 PIPE, BY-PASS	1
5. .010246 ELBOW, 1/2" 90 DEG FEMALE GALV	1
6. .010259 ELBOW, 3/4" 90 DEG STREET GALV	1
7. .010321 TEE 3/4 FEMALE GALV	1
8. .010508 COUPLER, JAW 5/8"	1
9. .010345 PIPE, NIPPLE 3/4 X 3 GALV	1
10. .010510 INSERT, JAW COUPLER	1
11. .012745 COUPLER, JAW 3/4	1
12. .029411 HOSE, BY-PASS ASSY	1
13. .029416 HOSE, SPRAY WAND ASSY	1
14. .029418 PUMP, HYPRO 6500 SERIES	1
15. .029419 VALVE, RELIEF 3/4	1
16. .029423 FRAME, MODEL 6500	1
17. .029427 BRKT, PUMP	1
18. .028390 ENGINE, HONDA 4.0 HP	1
19. .029428 GUARD, SHAFT	1
20. .221065 HOSE, SUCTION ASSY	1
21. .010241 LOCK, BARREL MOUNT	2
22. .010189 FTG, COUPLER QDC FEMALE 1/2"	1
23. .040160 FTG, NIPPLE QDC 1/2" W/ MALE THREADS	1

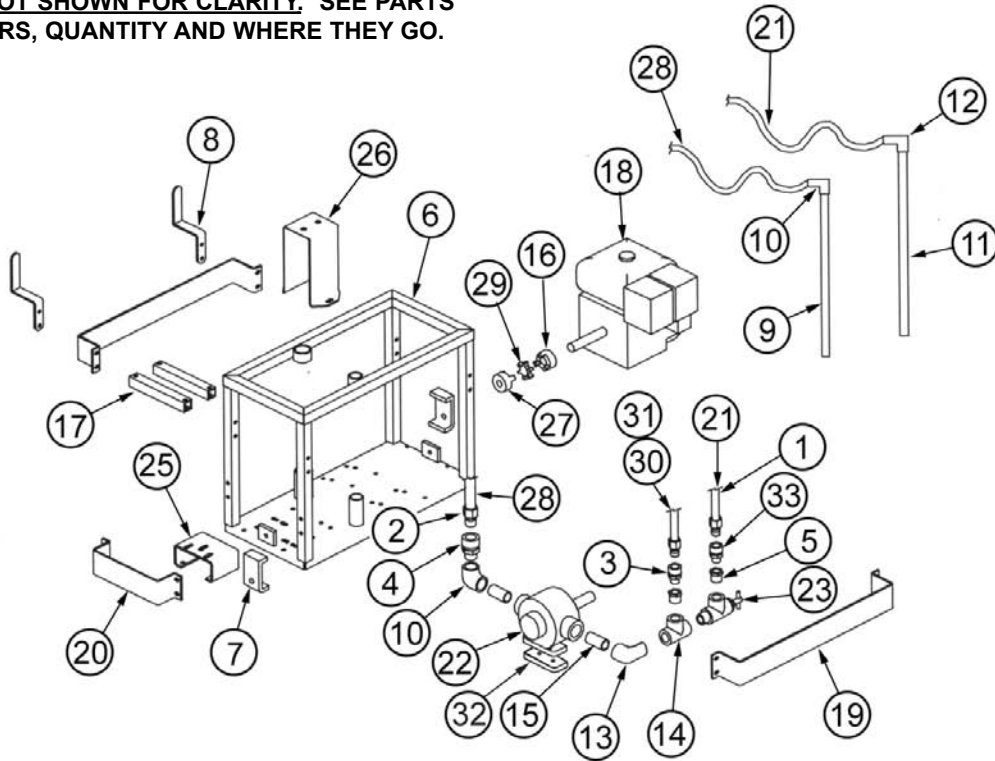
(FASTENER PART LIST)

ILL PART#	DESCRIPTION	QTY
24. .024669 FSTN, 7/16 X 2 (BARREL LOCK)	2
25. .010092 FSTN, 7/16 LW (BARREL LOCK)	2
26. .010019 FSTN, 5/16 X 3/4 (SHAFT GUARD)	2
.010019 FSTN, 5/16 X 3/4 (PUMP)	2
27. .010036 FSTN, 3/8 X 1 (PUMP MNT BRKT)	4
28. .010091 FSTN, 3/8 LW (PUMP MNT BRKT)	4
29. .017751 FSTN, 3/8 HARD FW (PUMP MNT BRKT)	4
30. .010022 FSTN, 5/16 X 1-1/2 (ENGINE)	4
31. .010082 FSTN, 5/16 FW (ENGINE)	4
.010082 FSTN, 5/16 FW (SHAFT GUARD)	2
.010082 FSTN, 5/16 FW (PUMP)	2
32. .010090 FSTN, 5/16 LW (ENGINE)	4
.010090 FSTN, 5/16 LW (SHAFT GUARD)	2
.010090 FSTN, 5/16 LW (PUMP)	2

3A PARTS

MODEL 7560 & 7560XL ASSEMBLY

FASTENERS ARE NOT SHOWN FOR CLARITY. SEE PARTS LIST FOR FASTENERS, QUANTITY AND WHERE THEY GO.



ILL PART#	DESCRIPTION	QTY
1 . .010177	. .NIPPLE, QDC MALE 1/2	. .2
2 . .010178	. .NIPPLE, QDC MALE 3/4	. .1
3 . .010189	. .COUPLER, QDC FEMALE 1/2	. .1
4 . .010190	. .COUPLER, QDC FEMALE 3/4	. .1
5 . .010208	. .BUSHING, REDUCER 3/4 X 1/2	. .2
6 . .010239	. .FRAME	. .1
7 . .010241	. .LOCK, BARREL MOUNT	. .2
8 . .010242	. .BRKT, HOSE HANGER	. .2
9 . .010243	. .PIPE, SUCTION	. .1
10 .010244	. .ELBOW, 3/4 90 DEG FEMALE	. .2
11 .010245	. .PIPE, BY-PASS	. .1
12 .010246	. .ELBOW, 1/2 90 DEG FEMALE	. .1
13 .010259	. .ELBOW, 3/4 90 DEG STREET	. .1
14 .010321	. .TEE, 3/4 FEMALE	. .1
15 .010345	. .NIPPLE, PIPE 3/4 X 3 GALV	. .2
16 .016745	. .COUPLER, JAW 3/4	. .1
17 .011115	. .BRKT, MOTOR MNT	. .2
18 .028390	. .ENGINE, HONDA 4/0 HP	. .1
19 .028494-27	. .GUARD, F/ FRAME	. .2
20 .028494-13	. .GUARD, F/ FRAME	. .1
21 .029411	. .HOSE, BY-PASS ASSY	. .1
22 .029412	. .PUMP, 7560 SERIES	. .1
. .029432	. .PUMP, 7560XL SERIES	. .1
23 .029413	. .VALVE, RELIEF	. .1
24 .029417	. .CLAMP (NOT SHOWN)	. .1
25 .029425	. .BRKT, PUMP	. .1
26 .029428	. .GUARD, SHAFT	. .1
27 .029434	. .COUPLER, JAW 15/16	. .1
28 .221065	. .HOSE, SUCTION ASSY	. .1
29 .010510	. .INSERT, JAW COUPLER	. .1
30 .032192	. .25' HOSE ASSEMBLY	. .opt
31 .032194	. .100' HOSE ASSEMBLY	. .opt

ILL PART#	DESCRIPTION	QTY
32 .039643	. .PUMP BRKT SPACER	. .1
33 .040160	. .FTG, NIPPLE QDC 1/2" W/ MALE THREADS	. .1

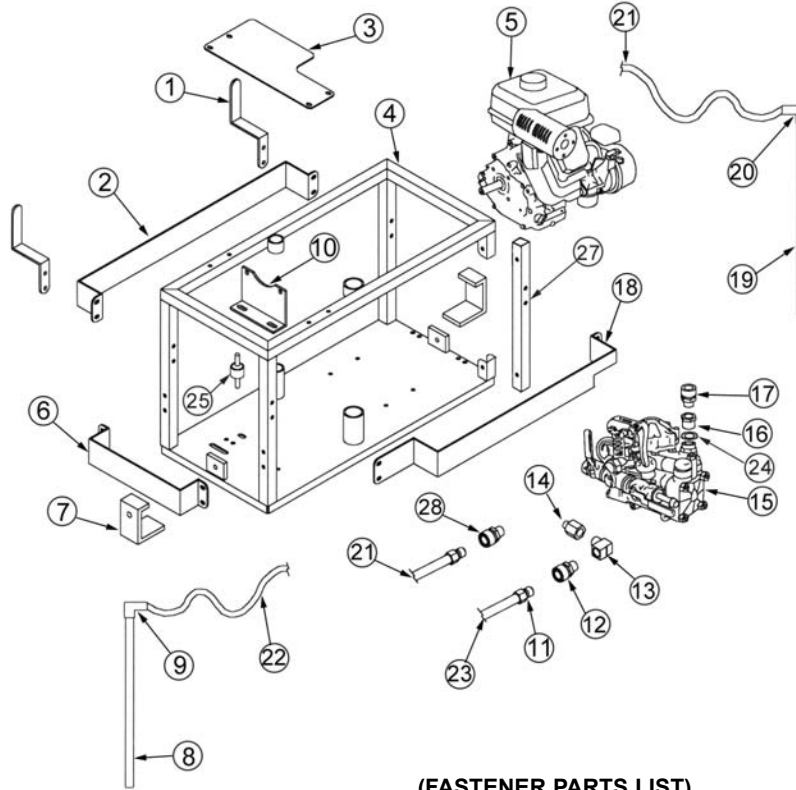
(FASTENER PARTS LIST)

ILL PART#	DESCRIPTION	QTY
34 .010036	. .FSTN, 3/8 X 1 (PUMP MNT BRKT)	. .4
35 .010091	. .FSTN, 3/8 LW (PUMP MNT BRKT)	. .4
36 .017751	. .FSTN, 3/8 HARD FW (PUMP MNT BRKT)	. .4
37 .010026	. .FSTN, 5/16 X 2-1/2 (ENGINE)	. .4
38 .010082	. .FSTN, 5/16 FW (ENGINE)	. .4
. .010082	. .FSTN, 5/16 FW (SHAFT GUARD)	. .2
. .010082	. .FSTN, 5/16 FW (2 FRAME GUARDS W/O HANGERS)	. .8
. .010082	. .FSTN, 5/16 FW (PUMP)	. .2
39 .010090	. .FSTN, 5/16 LW (ENGINE)	. .4
. .010090	. .FSTN, 5/16 LW (SHAFT GUARD)	. .2
. .010090	. .FSTN, 5/16 LW (ALL FRAME GUARDS)	. .12
. .010090	. .FSTN, 5/16 LW (PUMP)	. .2
40 .010022	. .FSTN, 5/16 X 1-1/2 (PUMP)	. .2
41 .010023	. .FSTN, 5/16 X 1-3/4 (ALL FRAME GUARDS)	. .12
42 .010100	. .FSTN, 5/16 HEX NUT (ENGINE)	. .4
. .010100	. .FSTN, 5/16 HEX NUT (SHAFT GUARD)	. .2
. .010100	. .FSTN, 5/16 HEX NUT (ALL FRAME GUARDS)	. .12
43 .024669	. .FSTN, 7/16 X 2 (BARREL LOCK)	. .2
44 .010092	. .FSTN, 7/16 LW (BARREL LOCK)	. .2

MODEL 9910 ASSEMBLY

3A PARTS

FASTENERS ARE NOT SHOWN FOR CLARITY.
SEE PARTS LIST FOR FASTENERS, QUANTITY
AND WHERE THEY GO.

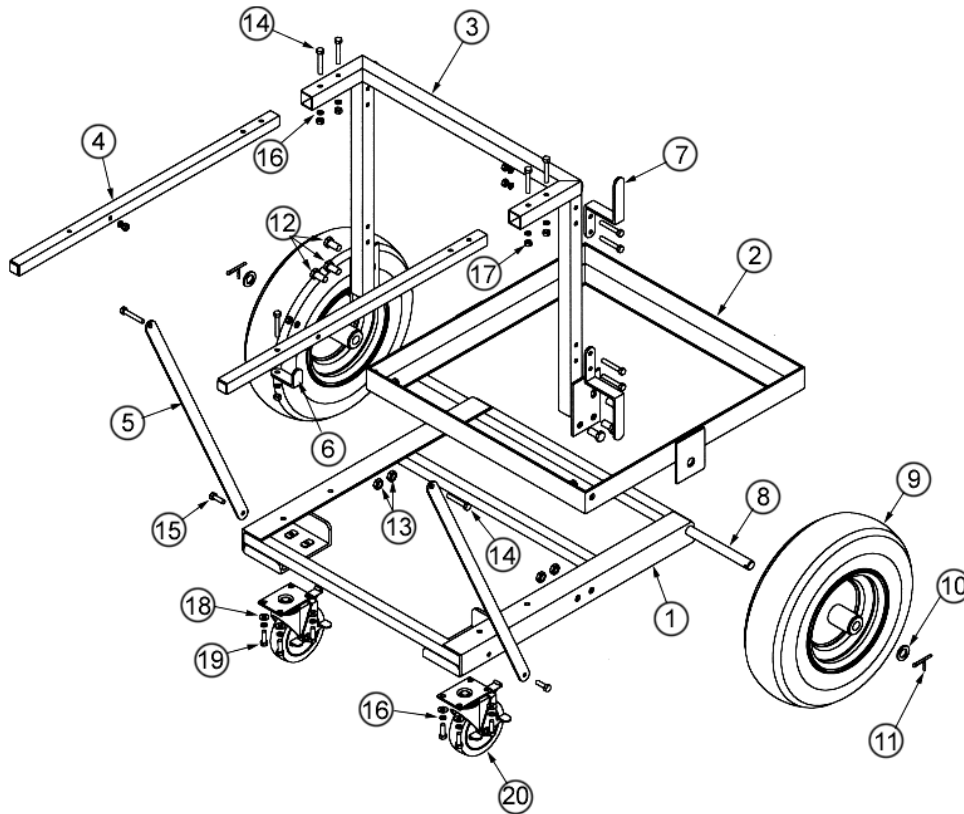


(FASTENER PARTS LIST)

ILL PART#	DESCRIPTION	QTY	ILL PART#	DESCRIPTION	QTY
1. .010242	..BRKT, C-MOD SY HOSE HANGER	2	29. .024669	..FSTN, 7/16 X 2 (BARREL LOCK)	2
2. .039074	..GUARD, M990 SPRAYER	1	30. .010092	..FSTN, 7/16 LW (BARREL LOCK)	2
3. .038966	..GUARD, M9910 SPRAYER (TOP)	1	31. .010023	..FSTN, 5/16 X 1-3/4 (ALL FRAME GUARDS)	16
4. .039079	..FRAME M9910 SPRAYER	1	32. .010022	..FSTN, 5/16 X 1-1/2 (ENGINE)	4
5. .033395	..ENGINE, KAWASAKI 5.5 HP	1	33. .010082	..FSTN, 5/16 FW (ENGINE)	4
..018961	..ENGINE, HONDA 5.5 HP	1	..010082	..FSTN, 5/16 FW (FRAME GUARDS W/O HANGERS)	12
6. .039073	..GUARD, M9910 SPRAYER (END)	1	..010082	..FSTN, 5/16 FW (ISOLATOR BRKT TO FRAME)	4
7. .039071	..LOCKS, BARREL M9910	2	34. .010090	..FSTN, 5/16 LW (ENGINE)	4
8. .010243	..SUCTION PIPE	1	..010090	..FSTN, 5/16 LW (ALL FRAME GUARDS)	16
9. .010244	..ELBOW 3/4 90 DEG FEMALE GALV	1	..010090	..FSTN, 5/16 LW (ISOLATOR BRKT TO FRAME)	4
10. .039072	..BRKT, ISOLATOR M9910 SPRAYER	1	..010090	..FSTN, 5/16 LW (PUMP TO ENGINE)	4
11. .040159	..FTG, COUPLER QDC 1/2" W/ FM THREADS	1	35. .039082	..FSTN, 5/16-18 X 3 (ISOLATOR BRKT TO PUMP)	2
12. .040160	..FTG, NIPPLE QDC 1/2" W/ MALE THREADS	1	36. .012612	..FSTN, 5/16 NYLOCK NUT	2
13. .010222	..ELBOW ADAPTER	1	37. .039081	..FSTN, 8M-1.25 X 25mm (PUMP TO ENGINE)	4
14. .039080	..ADAPTER, M9910 3/8 MALE X 1/2 FEMALE	1			
15. .039070	..PUMP, M9910-D30	1			
16. .039394	..ADAPTER BUSHING	1			
17. .010190	..FTG, COUPLER QDC FEMALE 3/4"	1			
18. .039138	..GUARD M9910 SPRAYER	1			
19. .010245	..PIPE, BY-PASS	1			
20. .010246	..ELBOW, 1/2" 90 DEG FEMALE GALV	1			
21. .038972	..HOSE, BY-PASS 3/4 (60")	1			
22. .221065	..HOSE, SUCTION 3/4 (60")	1			
23. .013393	..HOSE, PUSHLOCK 1/2" F/ SPRAYWAND	1			
24. .9910-390290	..O-RING SUPPLIED WITH PUMP)	1			
25. .028556	..RUBBER ISOLATOR	2			
26. .010498	..PLUG, 3/8" (NOT SHOWN F/ CLARITY)	1			
27. .039649	..TUBE, SIDE F/ 9910 SPRAYER	1			
28. .010189	..FTG, COUPLER QDC FEMALE 1/2"	1			

3A PARTS

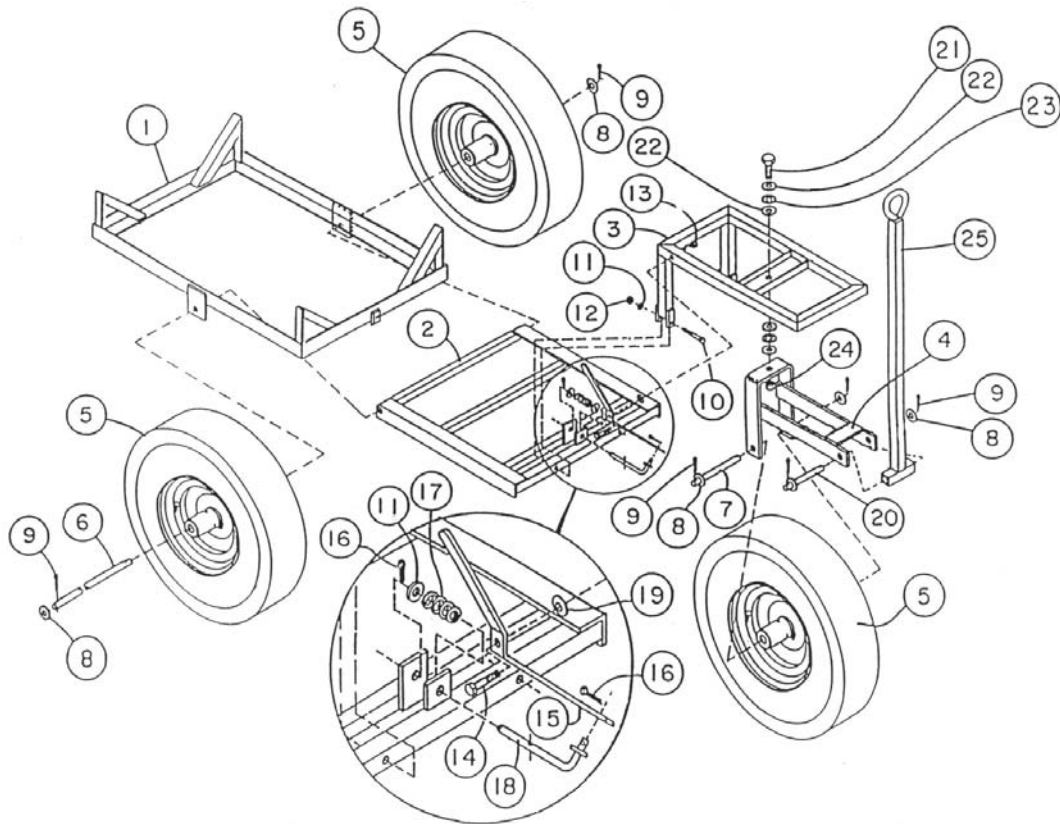
51-C PUSH CART ASSEMBLY



ILL.	PART #	DESCRIPTION	QTY.
1.	016023	FRAME, SPRAYER BASE	1
2.	016022	FRAME, BARREL BASE	1
3.	016021	FRAME, SPRAYER HANDLE	1
4.	018016	HANDLE, SPRAYER	2
5.	010253	BRACE, SPRAYER HANDLE	2
6.	010252	BRACKET, SPRAY WAND HOLDER	1
7.	010242	BRACKET, SPRAYER HOSE HANGER	2
8.	011163	AXLE, SPRAYER ASSEMBLY WHEEL	1
9.	221058	WHEEL AND TIRE ASSEMBLY	2
10.	010087	WASHER, FLAT 3/4"	2
11.	010133	PIN, COTTER 3/16" X 2"	2
12.	010067	BOLT, 1/2-13NC X 1	6
13.	010106	NUT, HEX 1/2-13 NC	6
14.	010023	BOLT, 5/16-18NC X 1 3/4	11
15.	010019	BOLT, 5/16-18NC X 3/4	2
16.	010090	WASHER, LOCK 5/16	21
17.	010100	NUT, 5/16-18NC	11
18.	010082	WASHER, FLAT 5/16"	8
19.	010020	BOLT, 5/16-18NC X 1	8
20.	038121	WHEEL, CASTER	2

61-T TOW CART ASSEMBLY

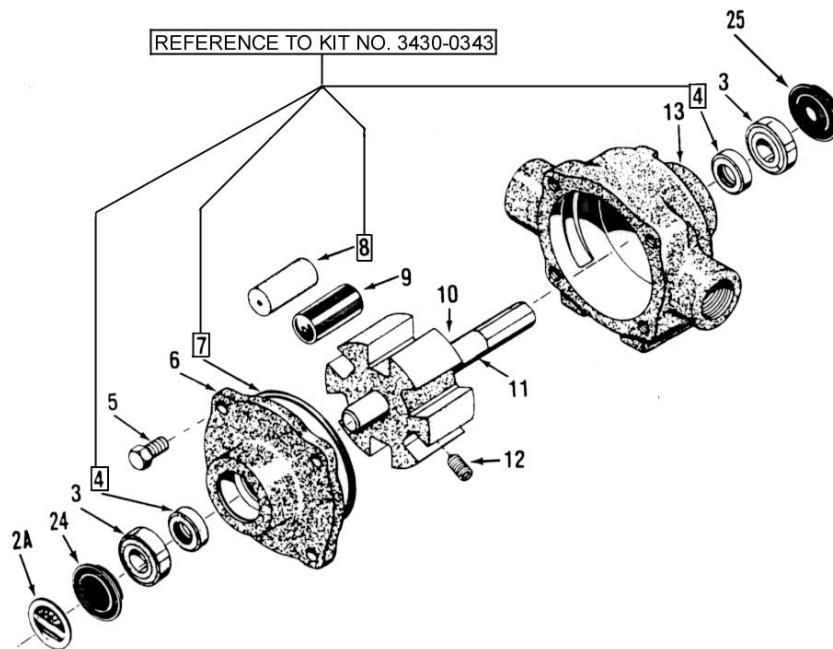
3A PARTS



ILL.	PART #	DESCRIPTION	QTY.
1.	.221060	.FRAME, BARREL BASE SPRAYER	1
2.	.022220	.FRAME, TOW MODEL SPRAYER REAR	1
3.	.020964	.FRAME, TOW MODEL SPRAYER FRONT	1
4.	.016174	.YOKE, TOW MODEL SPRAYER WHEEL	1
5.	.221058	.WHEEL AND TIRE ASSEMBLY	3
6.	.011163	.AXLE, REAR	1
7.	.011195	.AXLE, FRONT	1
8.	.010087	.WASHER, FLAT 3/4	6
9.	.010972	.COTTER KEY, 3/16 X 1 1/2	6
10.	.010042	.BOLT, 3/8-16 X 2 1/2	1
11.	.010083	.WASHER, FLAT 3/8	3
12.	.010102	.NUT, HEX 3/8-16NC	1
13.	.012612	.NUT, 5/16-18 NYLOX	1
14.	.010024	.BOLT, 5/16-18 X 2	1
15.	.011175	.LATCH, BARREL FRAME	1
16.	.012361	.COTTER KEY, 1/8 X 1	2
17.	.011752	.SPRING, LATCH PIN	1
18.	.022221	.PIN, LATCH BARREL FRAME	1
19.	.010082	.WASHER, FLAT 5/16	1
20.	.011755	.SHAFT, TOW HANDLE CONNECTING	1
21.	.018483	.BOLT, 3/4-10 X 2 1/4	1
22.	.012710	.RACE, BEARING THRUST	4
23.	.100340	.BEARING, THRUST NTA-1220	2
24.	.011584	.NUT, 3/4-10 NYLOC	1
25.	.221062	.HANDLE, TOW MODEL SPRAYER	1

3A PARTS

SERIES 6500 PUMP ASSEMBLY



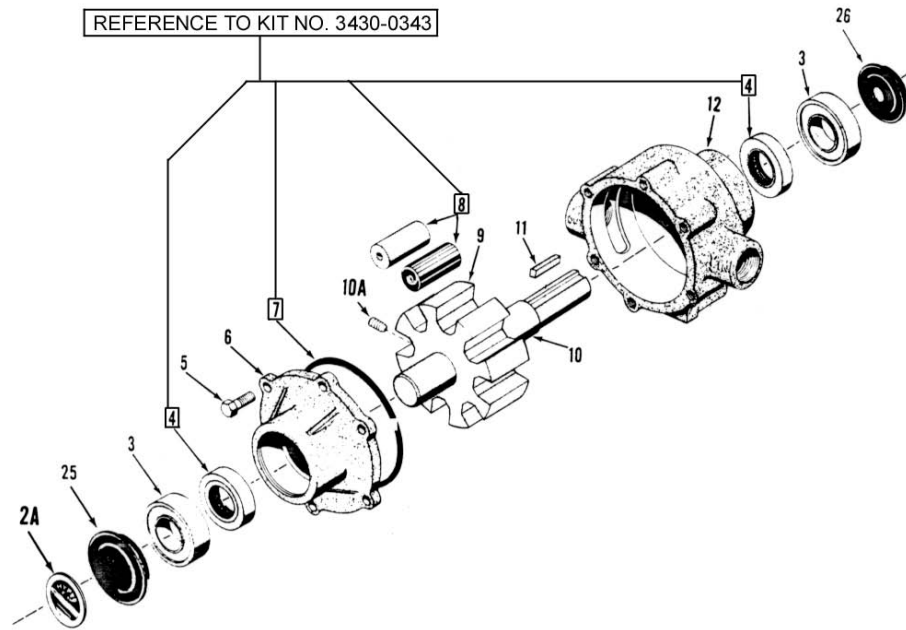
ILL.	PART #	DESCRIPTION	QTY.
2A.	6031-0258	NAME PLATE (SPECIFY PUMP MODEL #)	1
3.	2000-0010	BALL BEARING	2
4.	3430-0380	VITON SEAL (Reference to kit below)	2
5.	2210-0004	BOLT F/ END PLATE	4
6.	0200-6600C	END PLATE (CAST IRON)	1
	0200-6600N	END PLATE (NI-RESIST)	1
	0200-6600X	END PLATE (SILVER CAST)	1
7.	3430-0380	O-RING FOR END PLATE (Reference to kit below)	1
8.	3430-0380	SUPER ROLLER (Reference to kit below)	6
9.	1052-0004	BUNA-N ROLLER (OPTIONAL)	6
10.	0300-6600C	ROTOR (CAST IRON)	1
	0300-6600N	ROTOR (NI-RESIST)	1
	0300-6600X	ROTOR (SILVER CAST)	1
11.	0500-6600	SHAFT ONLY	1
12.	2230-0003	SET SCREW	1
	2230-0007	SET SCREW (SILVER CAST ONLY)	1
13.	0100-6600C	BODY (CAST IRON)	1
	0100-6600N	BODY (NI-RESIST)	1
	0100-6600X	BODY (SILVER CAST)	1
24.	2300-0021	BEARING COVER	1
25.	2300-0023	SHAFT BEARING COVER	1

REPAIR PARTS KIT NO. 3430-0380 CONSIST OF: (6) REF. 8 SUPER ROLLERS, (1) REF. 7 O-RINGS AND (2) REF. 4 VINTON SEALS.

NOTE: ALL PARTS REFERENCING TO KIT NO. 3430-0380 ARE SOLD AS A KIT. THEY CANNOT BE SOLD SEPARATELY.

SERIES 7560 PUMP ASSEMBLY

3A PARTS



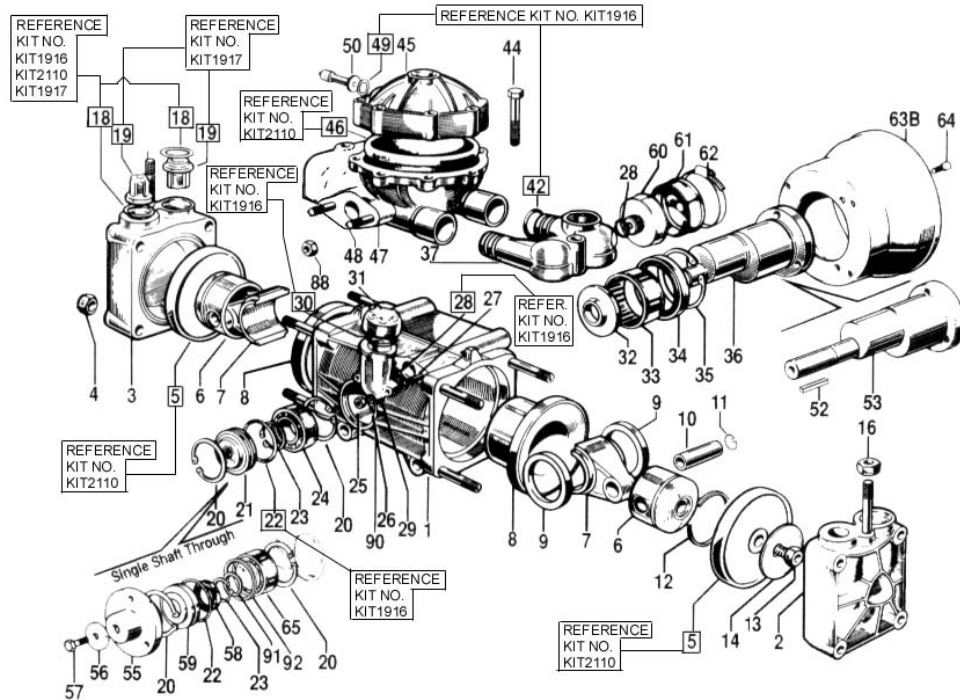
ILL.	PART #	DESCRIPTION	QTY.
2A.	6031-0258	NAME PLATE (SPECIFY PUMP MODEL #)	.1
3.	2008-0001	SEALED BALL BEARING	.2
4.	3430-0343	VITON SEAL (Refer to kit below)	.2
5.	2210-0004	BOLT	.6
6.	0204-7500C	END PLATE (CAST IRON)	.1
	0204-7500N	END PLATE (NI-RESIST)	.1
	0204-7500X	END PLATE (SILVER CAST)	.1
7.	3430-0343	O-RING GASKET FOR END PLATE (Refer to kit below)	.1
8.	3430-0343	SUPER ROLLER (Refer to kit below)	.8
9.	0308-7500C	ROTOR (CAST IRON)	.1
	0308-7500N	ROTOR (NI-RESIST)	.1
	0308-7500X	ROTOR (SILVER CAST)	.1
10.	0500-7400	SHAFT ONLY	.1
10A.	2230-0003	SET SCREW	.1
	2230-0007	SET SCREW (SILVER CAST ONLY)	.1
11.	1610-0005	KEY	.1
12.	0104-7500C	BODY (CAST IRON)	.1
	0104-7500N	BODY (NI-RESIST)	.1
	0104-7500X	BODY (SILVER CAST)	.1
25.	2300-0020	REAR BEARING COVER	.1
26.	2300-0022	SHAFT BEARING COVER	.1

REPAIR PARTS KIT NO. 3430-0343 (UNIVERSAL) CONSIST OF: (8) REF. 8 SUPER ROLLERS, (2) REF. 7 O-RINGS AND (4) REF. 4 VITON SEALS.

NOTE: ALL PARTS REFERENCING TO KIT NO. 3430-0343 ARE SOLD AS A KIT. THEY CANNOT BE SOLD SEPARATELY.

3A PARTS

SERIES 9910 PUMP ASSEMBLY



ILL.	PART#	DESCRIPTION	QTY	ILL.	PART#	DESCRIPTION	QTY
1.	9910-620011	.Pump Body	1	34.	9910-620130	.Seal	1
2.	9910-620101	.Head Assembly (Right Hand)	1	35.	9910-620330	.Retainer Ring	1
3.	9910-620102	.Head Assembly (Left Hand)	1	36.	9910-620170	.Crankshaft	1
4.	9910-320130	.Nut(12MA)	8	37.	9910-620150	.Suction Attachment	1
5.	9910-620085	.Diaphragm, Desmopan (Refer to Kit)	2	42.	9910-390060	.O-Ring (Refer to Kit)	4
6.	9910-620120	.Piston	2	44.	9910-621780	.Bolt (8MA x 40)	8
7.	9910-620140	.Connecting Rod	2	45.	9910-620230	.Accumulator Head	1
8.	9910-620110	.Piston Sleeve	2	46.	9910-550190	.Accumulator Diaphragm (Refer to Kit)	1
9.	9910-580130	.Retainer Ring	2	47.	9910-629209	.Accumulator Manifold	1
10.	9910-380300	.Connecting Rod Pin	2	48.	9910-30211	.Studs	2
11.	9910-380080	.Retainer Ring	4	49.	9910-650542	.O-Ring (Refer to Kit)	1
12.	9910-160230	.Piston Ring	2	50.	9910-180020	.Air Valve	1
13.	9910-580360	.Retaining Bolt	2	52.	9910-620680	.Key	1
14.	9910-1040180	.Retaining Washer	2	53.	9910-620172	.Crankshaft 20mm ThruShaft	1
16.	9910-180150	.Nut(10MA)	2		9910-620174	.Crankshaft, 3/4" solid	1
18.	9910-620030	.O-Ring (Refer to Kit)	4	55.	9910-620661	.Retainer	1
19.	9910-1409050	.Check Valve Assembly (Refer to Kit)	4	56.	9910-620670	.Washer	1
20.	9910-11120	.Retainer Ring	1	57.	9910-180370	.Bolt	1
21.	9910-620026	.Oil Sealing Cap	1	58.	9910-620630	.Seal	1
22.	9910-620210	.O-Ring (Refer to Kit)	1	59.	9910-620021	.Spacer	1
23.	9910-620291	.Retaining Ring	1	60.	9910-650660	.Dampener Body	1
24.	9910-620190	.Ball Bearing	1	61.	9910-650670	.Dampener Diaphragm	1
25.	9910-390440	.Nut	2	62.	9910-650690	.Clamp	1
26.	9910-550331	.Washer	2	63B	9910-1500350	.Durable Plastic Shield	1
27.	9910-550330	.Stud	1	64.	9910-820670	.Bolt (10MA x 16)	4
28.	9910-180101	.O-Ring (Refer to Kit)	1	65.	9910-620190	.Ball Bearing	1
29.	9910-550030	.Oil Sight Glass	1	88.	9910-390270	.Nut	2
30.	9910-550040	.O-Ring (Refer to Kit)	1	90.	9910-130171	.Plug, Drain	1
31.	9910-550056	.Cap F/ Oil Sight Glass	1	91.	9910-620930	.Bearing Spacer (Small)	1
32.	9910-620160	.Spacer Washer	1	92.	9910-620940	.Bearing Spacer (Large)	1
33.	9910-550060	.Roller Bearing	1				

REPAIR AND MAINTENANCE KITS AVAILABLE

(A) - O-Ring Part Kit No. 9910-KIT1916 consists of these O-Rings: Ref. 18 (4 ea.), Ref. 22 (1 ea.), Ref. 28 (1 ea.), Ref. 30 (1 ea.), Ref. 42 (4 ea.), Ref. 49 (1 ea.)

(B) - DIAPHRAGM PARTS KIT NO. 9910-KIT2110 consists of: Ref. 5 (2 ea.) Diaphragm, Ref. 18 (4 ea.) O-Rings, Ref. 46 (1 ea.)

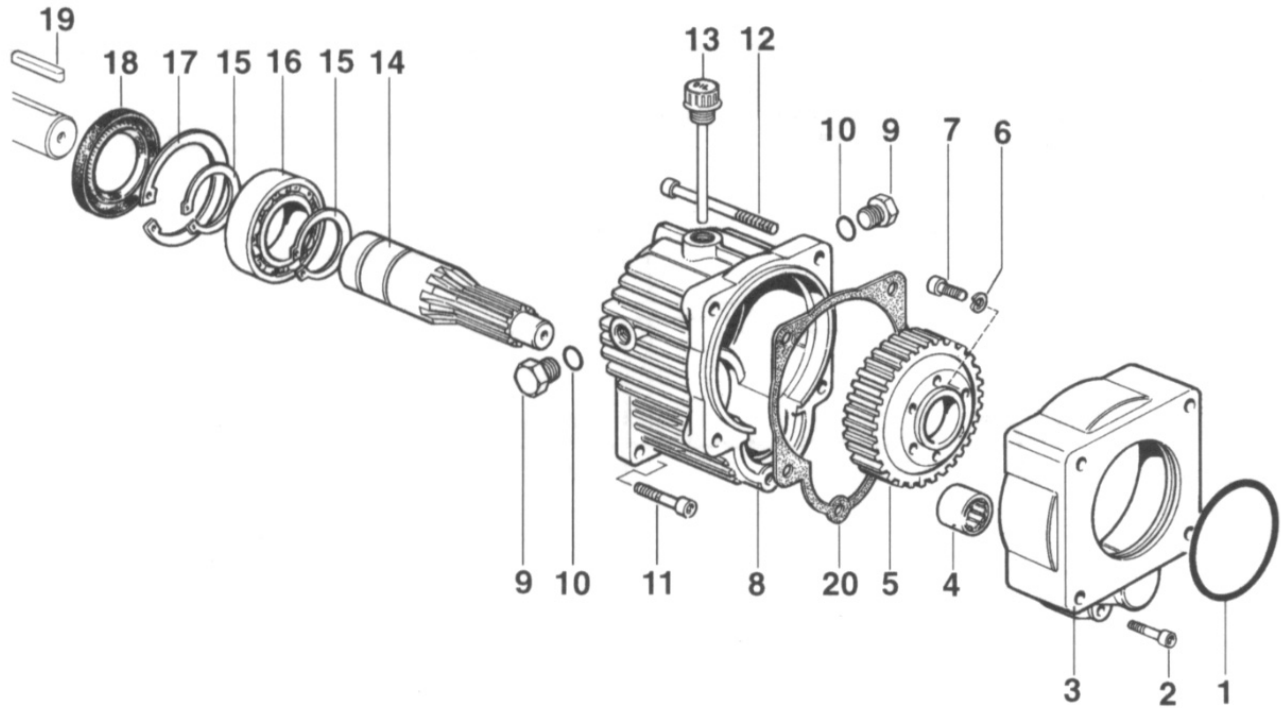
(C) - VALVE PARTS KIT NO. 9910KIT1917 Consist of: Ref. 18 (4 ea.) O-Rings, Ref. 19 (4 ea.) Valves.

3A-9

Note: ALL PARTS REFERENCING TO A PARTICULAR KIT, IS SOLD AS A KIT. THEY CANNOT BE SOLD SEPARATELY.

**GEAR REDUCTION KIT FOR
MODEL 9910 PUMP**

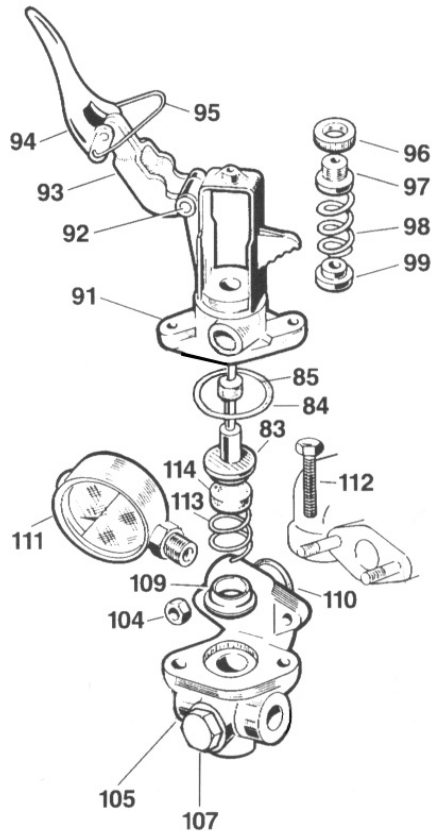
**3A
PARTS**



ILL.	PART #	DESCRIPTION	QTY.
1.	9910-620561	O-Ring	1
2.	9910-180030	Bolt	1
3.	9910-621000	Pump Adapter Flange	1
4.	9910-620990	Bearing	1
5.	9910-620980	Gear	1
6.	9910-200231	Lock Washer	6
7.	9910-620470	Bolt	3
8.	9910-620960	Gearbox Body	1
9.	9910-880530	Plug	2
10.	9910-740290	O-Ring	2
11.	9910-651000	Bolt	4
12.	9910-621010	Bolt	4
13.	9910-126048	Vent Plug	1
14.	9910-620970	Pinion Gear	1
15.	9910-320240	Snap Ring	2
16.	9910-961780	Bearing	1
17.	9910-961790	Snap Ring	1
18.	9910-961800	Seal	1
19.	9910-881090	Key	1
20.	9910-620950	Gasket	1

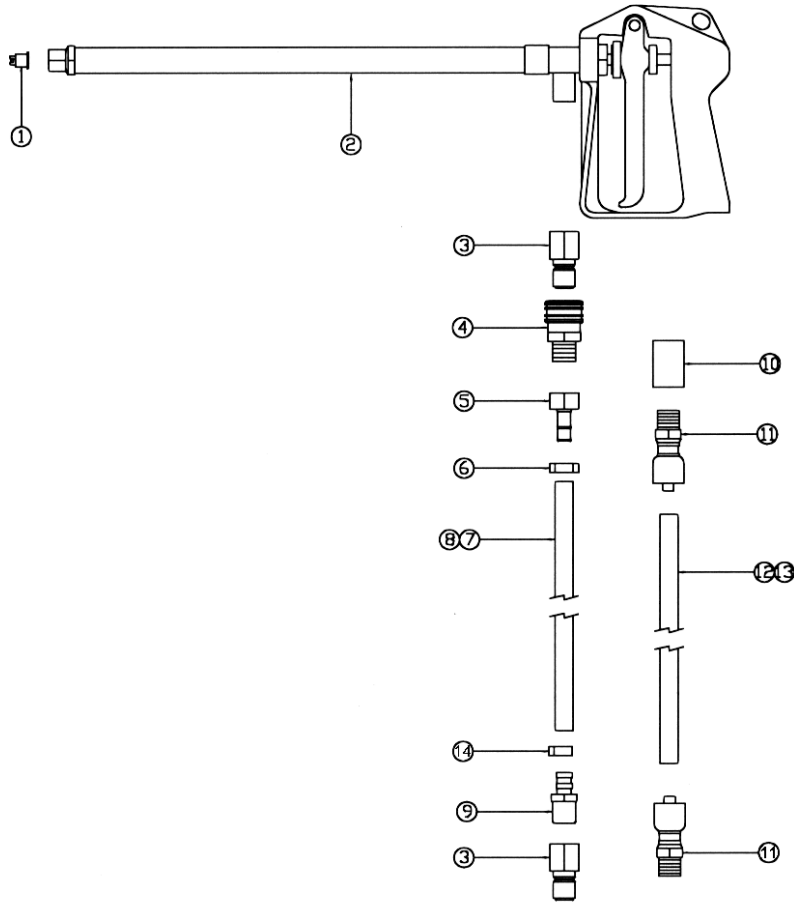
3A PARTS

CONTROL KIT FOR MODEL 9910 PUMP



ILL.	PART #	DESCRIPTION	QTY.
83.	9910-320433	Relief Valve Poppet Retainer	1
84.	9910-320511	Gasket Seal O-Ring	1
85.	9910-390140	Tension Spring Guide/Seal	1
91.	9910-320410	Tension Spring Housing	1
92.	9910-320480	Pin	1
93.	9910-320460	Lever Guide	1
94.	9910-320470	Pressure Release Lever	1
95.	9910-320490	Locking Clip	1
96.	9910-320450	Pressure Adjustment Clip	1
97.	9910-320440	Threaded Guide	1
98.	9910-10190	Tension Spring	1
99.	9910-230120	Tension Spring Retainer	1
105.	9910-620220	Relief Valve Body	1
107.	9910-130171	Plug	1
109.	9910-450110	Spring Holder	1
110.	9910-550350	O-Ring	1
111.	9910-550545	Pressure Gauge (Oil Filled)	1
112.	9910-180370	Bolt (8MA x 25)	2
113.	9910-320420	Tension Spring	1
114.	9910-110122	Relief Valve Seat (Vinton)	1
114.	9910-110121	Relief Valve Seat (Urethane)	1

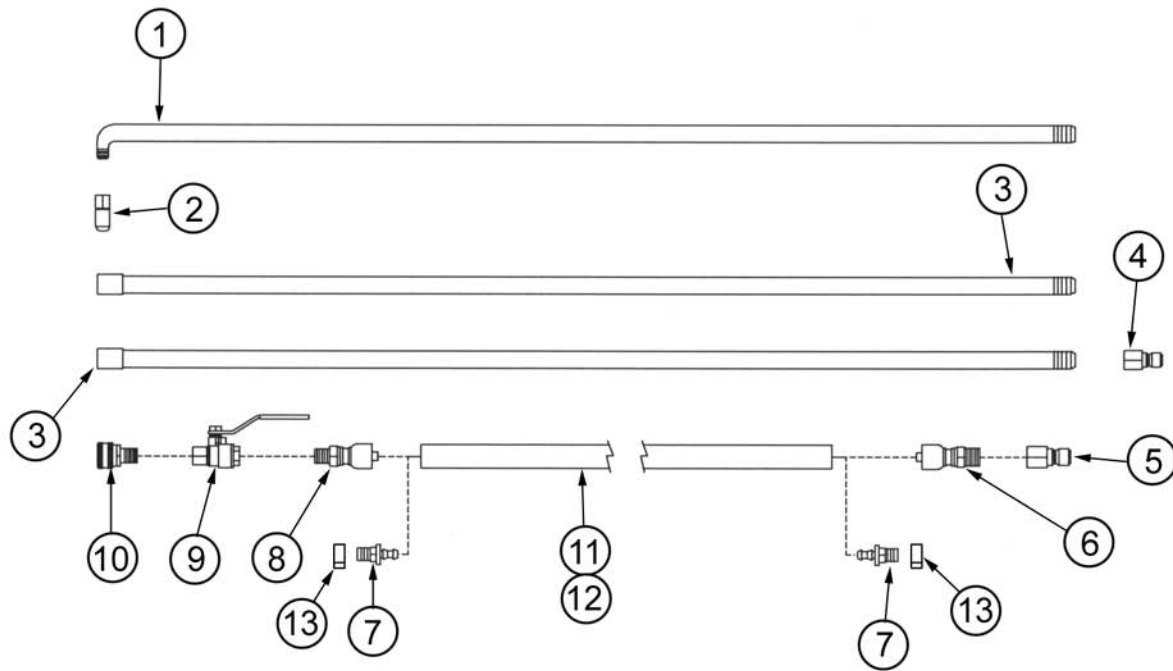
SPRAY WAND ASSEMBLY



ILL.	PART #	DESCRIPTION	QTY.
1	029420	SPRAY BRASS 4020	1
2	029415	GUN, SPRAY F/ SPRAYER	1
3	010177	FTG, NIPPLE QDC MALE 1/2" (7560's & 9910)	2
4	010189	FTG, COUPLER QDC FEMALE 1/2" (7560's & 9910)	1
5	9920164.604.14	FTG, 3/8 HOSE CONNECTOR W/ 1/2" NUT (6500 & 7560's)	1
6	029417	CLAMP 01518 (6500 & 7560's)	1
7	013392	HOSE, PUSHLOCK 3/8" 25' (6500 & 7560)	1
8	013392	HOSE, PUSHLOCK 3/8" 100" (OPTIONAL) (6500 & 7560's)	1
9	010196	FTG, PUSHLOCK MALE 3/8 X 1/2-14 (6500 & 7560's)	1
10	010336	COUP., 1/2" PIPE (9910 only)	1
11	013057	SWAGE, 11355-8-6 PERM. (9910 only)	2
12	028939	HOSE, AEROQUIP H-I 25' (9910 only)	25 Ft.
13	028939	HOSE, AEROQUIP H-I 100' (OPTIONAL) (9910 only)	100 Ft.
14	019430	FSTN, CLAMP #4 MINI HOSE (6500 & 7560 SERIES)	1

3A PARTS

3 PIECE WAND ASSEMBLY



ILL.	PART #	DESCRIPTION	QTY.
1.	010236	SPRAY WAND END W/ 1/4" ELBOW	1
2.	010234	NOZZLE, 1/4 HUDSON SPRAY	1
3.	010235	SPRAY WAND CENTER 3FT SECTION	2
4.	010176	FTG, NIPPLE QDC MALE 3/8" (7560's & 9910)	1
5.	010177	FTG, NIPPLE QDC MALE 1/2" (7560's & 9910)	1
6.	013055	SWAGE, 11355-6-6 SWIV (9910 ONLY)	1
7.	010196	FTG, PUSHLOCK MALE 3/8 X 1/2-14 (6500 & 7560 SERIES)	2
8.	013057	SWAGE, 11355-8-6 SWIV (9910 ONLY)	1
9.	010238	VALVE, 3/8 PARKER BALL	1
10.	010188	FTG, NIPPLE QDC FEMALE 3/8" (7560's & 9910)	1
11.	028939	HOSE, 3/8 AEROQUIP HIGH IMPLUSE 25' (9910 ONLY)	1
12.	028939	HOSE, 3/8 AEROQUIP HIGH IMPLUSE 100' (OPTIONAL)	1
12.	013392	HOSE, 3/8 PUSHLOCK 25' (6500 & 7560 SERIES)	1
12.	013392	HOSE, 3/8 PUSHLOCK 100' (6500 & 7560 SERIES)(OPT)	1
13.	019430	FSTN, CLAMP #4 MINI HOSE (6500 & 7560 SERIES)	2